

# Lower Thames Crossing

## 6.2 Environmental Statement Figures

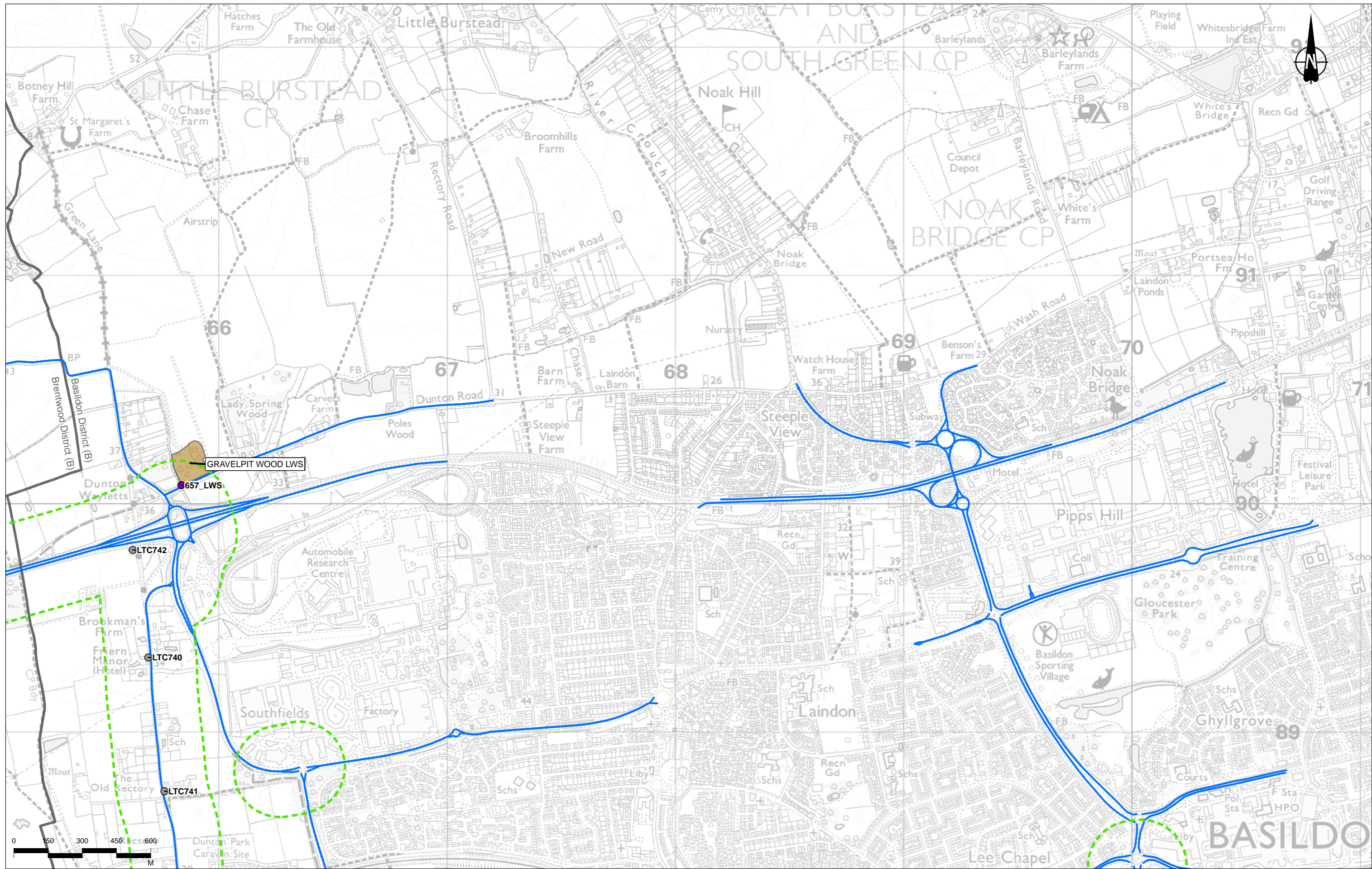
### Figure 5.6 - Operational Phase Receptors and Results (4 of 4)

APFP Regulation 5(2)(a)  
Infrastructure Planning  
(Applications: Prescribed Forms and Procedure)  
Regulations 2009  
Volume 6

**DATE:** October 2022

Planning Inspectorate Scheme Ref: TR010032  
Application Document Ref: TR010032/APP/6.2

**VERSION:** 1.0



Contains Ordnance Survey data. © Crown copyright and database rights 2022. Ordnance Survey 100030649.  
Contains public sector information licensed under the Open Government Licence v3.0

Rev	Status	Rev. Date	Purpose of revision	Drawn	Checked	Approved
P02	S2	19/10/2022	DCO Application	CD	MS	PM

Legend	
Route Alignment	Ancient Woodland (AW)
Order Limits	Local Nature Reserve (LNR)
District Borough Boundary	Local Wildlife Site (LWS)/Site of Importance for Nature Conservation (SINC)
Study Area	Sites of Special Scientific Interest (SSSI)
Operational Modelled Road	Roadside Nature Reserve (RNR)
Air Quality Management Area (AQMA)	Ramsar Site (RAMSAR)
Veteran Tree	Special Areas of Conservation (SAC)
Operational Human Receptors	Sites of Special Scientific Interest (SSSI)
Project Change in Annual Mean NO <sub>2</sub> at Human Receptors	Sites of Special Scientific Interest (SSSI)
Imperceptible change	Sites of Special Scientific Interest (SSSI)
Perceptible decrease	Sites of Special Scientific Interest (SSSI)
Perceptible increase > AQS objective	Sites of Special Scientific Interest (SSSI)
Perceptible increase	Sites of Special Scientific Interest (SSSI)
Perceptible increase > AQS objective	Sites of Special Scientific Interest (SSSI)
Receptor Demolished with Project	Sites of Special Scientific Interest (SSSI)
Short-term AQS Objective Receptor	Sites of Special Scientific Interest (SSSI)
Operational Ecological Receptors	Sites of Special Scientific Interest (SSSI)
Ecological Receptor	Sites of Special Scientific Interest (SSSI)
Epping Forest (SAC Gridded Receptor)	Sites of Special Scientific Interest (SSSI)
Ecological Transects	Sites of Special Scientific Interest (SSSI)

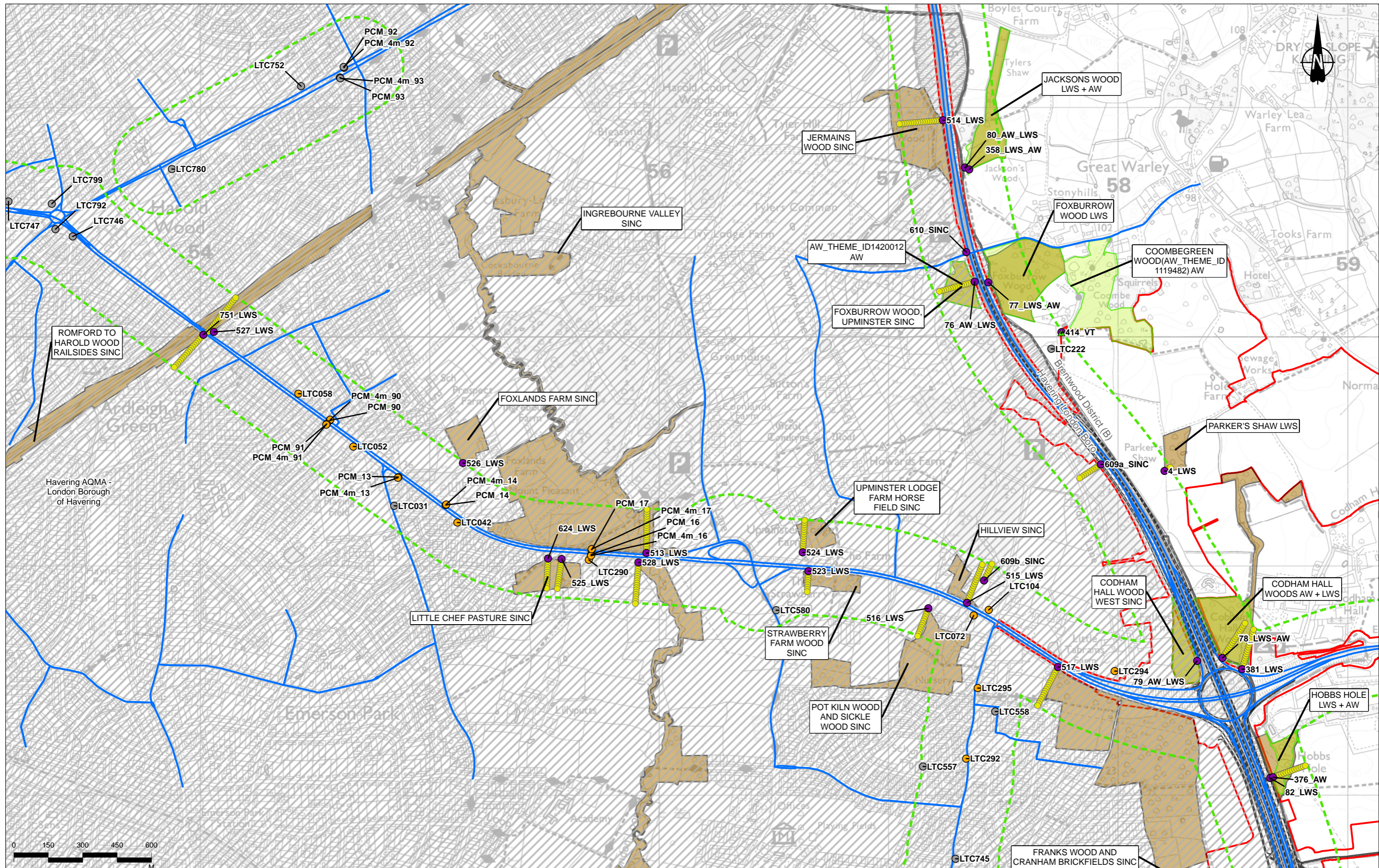


Client: national highways

Project: LOWER THAMES CROSSING

Status	DCO Application	Original Size	A3	Revision	P02
Application Document Number	TR010032/APP/6.2	Scale	1:15,000		
Drawing Title	Figure 5.6 - Operational Phase Receptors and Results				
Drawing Number	HE540039-CJV-EAQ-SZP_EGNE0000000-DR-LE-50012				
Page 64 of 83					





Contains Ordnance Survey data. © Crown copyright and database rights 2022. Ordnance Survey 100030649.  
Contains public sector information licensed under the Open Government Licence v3.0

Rev	Status	Rev. Date	Purpose of revision	Drawn	Checked	Approved
P02	S2	19/10/2022	DCO Application	CD	MS	PM

**Legend**

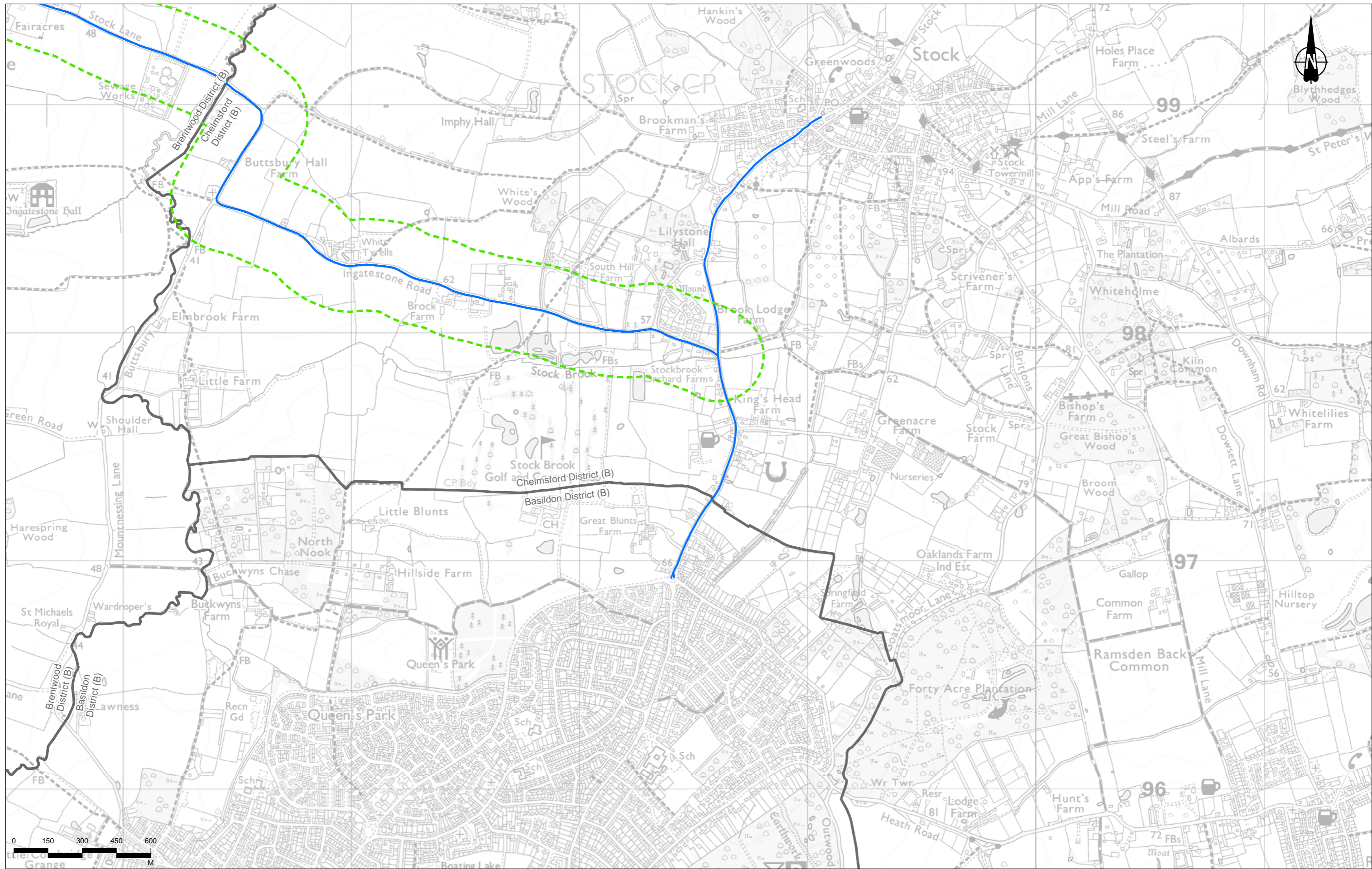
<ul style="list-style-type: none"> <li>Route Alignment</li> <li>Order Limits</li> <li>District Borough Boundary</li> <li>Study Area</li> <li>Operational Modelled Road</li> <li>Air Quality Management Area (AQMA)</li> </ul>	<ul style="list-style-type: none"> <li>Ancient Woodland (AW)</li> <li>Local Nature Reserve (LNR)</li> <li>Local Wildlife Site (LWS)/Site of Importance for Nature Conservation (SINC)</li> <li>National Nature Reserve (NNR)</li> </ul>	<ul style="list-style-type: none"> <li>Ramsar Site (RAMSAR)</li> <li>Special Areas of Conservation (SAC)</li> <li>Sites of Special Scientific Interest (SSSI)</li> <li>Roadside Nature Reserve (RNR)</li> </ul>	<ul style="list-style-type: none"> <li>Veteran Tree</li> <li>Operational Human Receptors</li> <li>Project Change in Annual Mean NO<sub>2</sub> at Human Receptors</li> <li>Imperceptible change</li> <li>Perceptible decrease</li> </ul>	<ul style="list-style-type: none"> <li>Perceptible decrease &gt; AQS objective</li> <li>Perceptible increase</li> <li>Perceptible increase &gt; AQS objective</li> <li>Receptor Demolished with Project</li> </ul>	<ul style="list-style-type: none"> <li>Short-term AQS Objective Receptor</li> <li>Operational Ecological Receptors</li> <li>Ecological Receptor</li> <li>Epping Forest (SAC Gridded Receptor)</li> <li>Ecological Transects</li> </ul>
---	---	---	--	--	--

Client: national highways

Project: LOWER THAMES CROSSING

Status	DCO Application	Original Size	A3	Revision	P02
Application Document Number	TR010032/APP/6.2	Scale	1:15,000		
Drawing Title	Figure 5.6 - Operational Phase Receptors and Results				
Drawing Number	HE540039-CJV-EAQ-SZP_EGNE0000000-DR-LE-50012				

Page 66 of 83



Contains Ordnance Survey data. © Crown copyright and database rights 2022. Ordnance Survey 100030649.  
Contains public sector information licensed under the Open Government Licence v3.0

Rev	Status	Rev. Date	Purpose of revision	Drawn	Chkd	Apprv
P02	S2	19/10/2022	DCO Application	CD	MS	PM

Legend	
Route Alignment	Ancient Woodland (AW)
Order Limits	Local Nature Reserve (LNR)
District Borough Boundary	Local Wildlife Site (LWS)/Site of Importance for Nature Conservation (SINC)
Study Area	Sites of Special Scientific Interest (SSSI)
Operational Modelled Road	Roadside Nature Reserve (RNR)
Air Quality Management Area (AQMA)	Ramsar Site (RAMSAR)
Veteran Tree	Special Areas of Conservation (SAC)
Operational Human Receptors	Sites of Special Scientific Interest (SSSI)
Project Change in Annual Mean NO <sub>2</sub> at Human Receptors	Roadsides Nature Reserve (RNR)
Imperceptible change	Veteran Tree
Perceptible decrease	Project Change in Annual Mean NO <sub>2</sub> at Human Receptors
Perceptible decrease > AQS objective	Imperceptible change
Perceptible increase	Perceptible decrease
Perceptible increase > AQS objective	Perceptible decrease > AQS objective
Receptor Demolished with Project	Short-term AQS Objective Receptor
Short-term AQS Objective Receptor	Operational Ecological Receptors
Ecological Receptor	Ecological Receptor
Epping Forest (SAC Gridded Receptor)	Ecological Receptor
Ecological Transects	Ecological Receptor



Client: national highways

Project: LOWER THAMES CROSSING

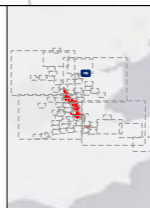
Status	DCO Application	Original Size	A3	Revision	P02
Application Document Number	TR010032/APP/6.2	Scale	1:15,000		
Drawing Title	Figure 5.6 - Operational Phase Receptors and Results				
Drawing Number	HE540039-CJV-EAQ-SZP_EGNE0000000-DR-LE-50012				
Page 67 of 83					



Contains Ordnance Survey data. © Crown copyright and database rights 2022. Ordnance Survey 100030649.  
Contains public sector information licensed under the Open Government Licence v3.0

Rev	Status	Rev. Date	Purpose of revision	Drawn	Chkd	Apprvd
P02	S2	19/10/2022	DCO Application	CD	MS	PM

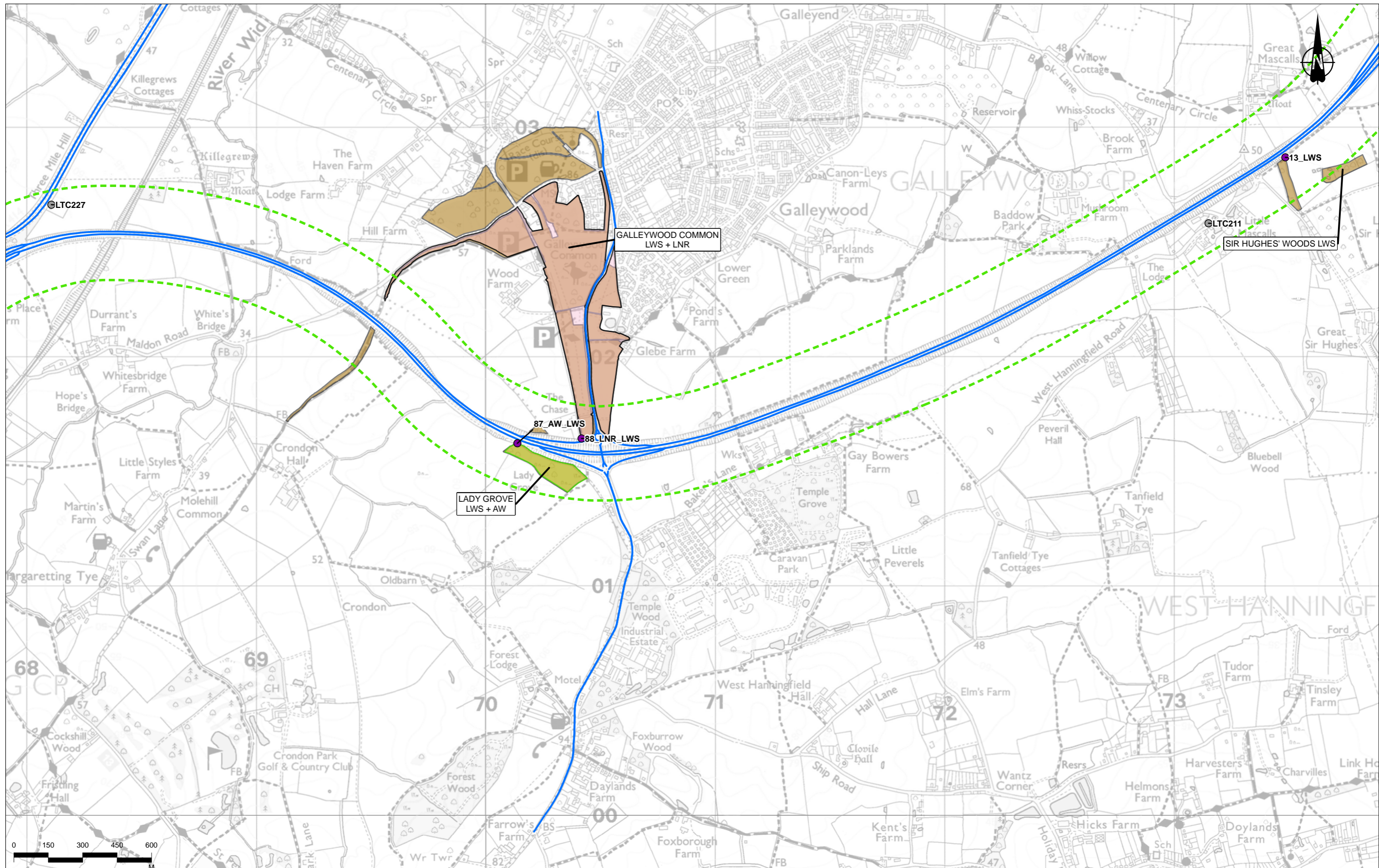
Legend	
Route Alignment	Ancient Woodland (AW)
Order Limits	Local Nature Reserve (LNR)
District Borough Boundary	Local Wildlife Site (LWS)/Site of Importance for Nature Conservation (SINC)
Study Area	Sites of Special Scientific Interest (SSSI)
Operational Modelled Road	Roadside Nature Reserve (RNR)
Air Quality Management Area (AQMA)	Ramsar Site (RAMSAR)
Veteran Tree	Special Areas of Conservation (SAC)
Operational Human Receptors	Sites of Special Scientific Interest (SSSI)
Project Change in Annual Mean NO <sub>2</sub> at Human Receptors	National Nature Reserve (NNR)
Imperceptible change	Veteran Tree
Perceptible decrease	Project Change in Annual Mean NO <sub>2</sub> at Human Receptors
Perceptible increase > AQS objective	Imperceptible change
Perceptible increase	Perceptible decrease
Perceptible increase > AQS objective	Perceptible decrease > AQS objective
Receptor Demolished with Project	Short-term AQS Objective Receptor
Ecological Receptor	Operational Ecological Receptors
Epping Forest (SAC Gridded Receptor)	Ecological Receptor
Ecological Transects	Ecological Transects



Client: national highways

Project: LOWER THAMES CROSSING

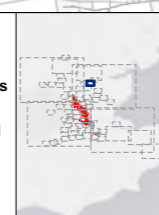
Status	DCO Application	Original Size	A3	Revision	P02
Application Document Number	TR010032/APP/6.2	Scale	1:15,000		
Drawing Title	Figure 5.6 - Operational Phase Receptors and Results				
	Page 68 of 83				
Drawing Number	HE540039-CJV-EAQ-SZP_EGNE0000000-DR-LE-50012				



Contains Ordnance Survey data. © Crown copyright and database rights 2022. Ordnance Survey 100030649.  
Contains public sector information licensed under the Open Government Licence v3.0

Rev	Status	Rev. Date	Purpose of revision	Drawn	Checked	Approved
P02	S2	19/10/2022	DCO Application	CD	MS	PM

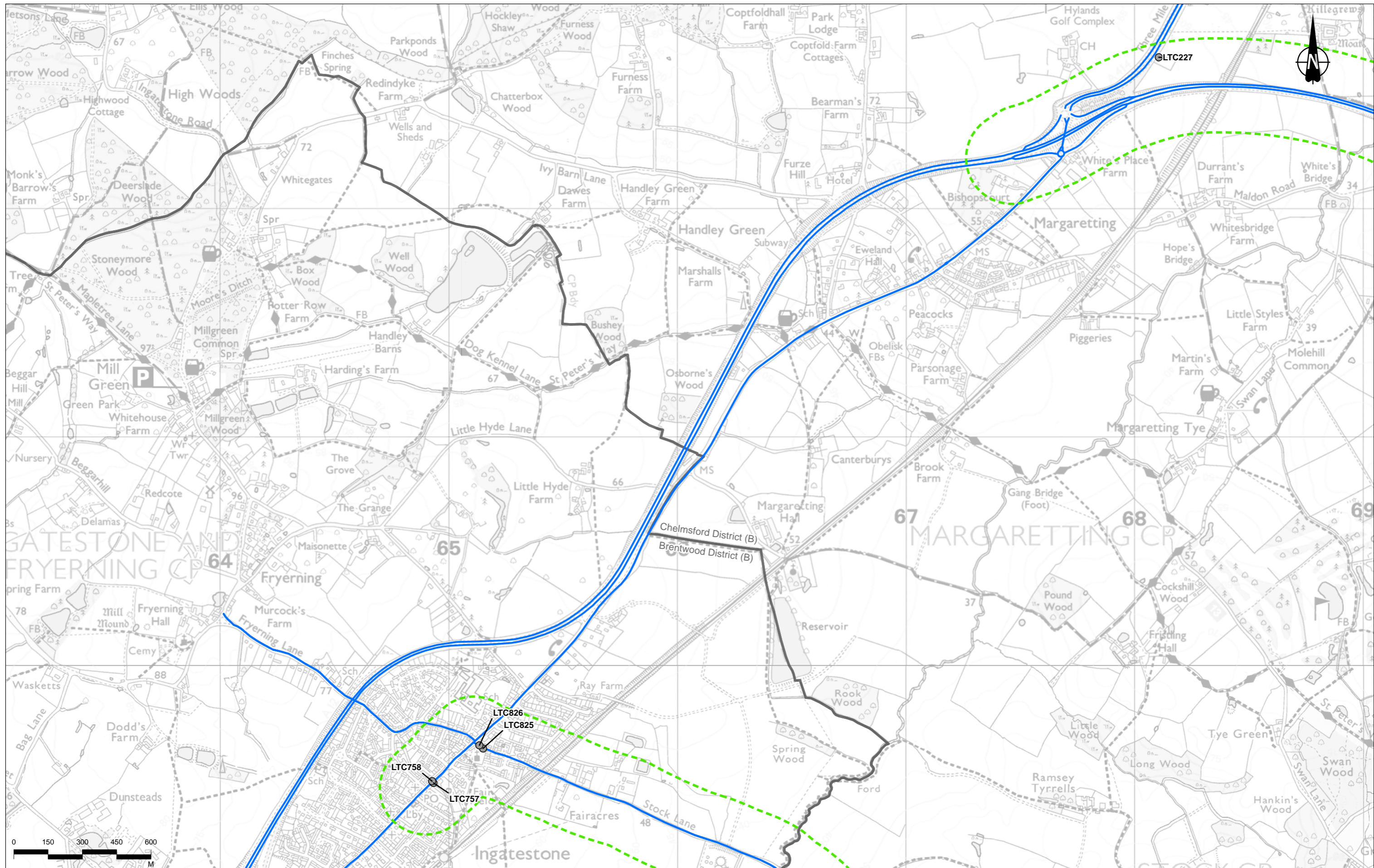
Legend	
Route Alignment	Ancient Woodland (AW)
Order Limits	Local Nature Reserve (LNR)
District Borough Boundary	Local Wildlife Site (LWS)/Site of Importance for Nature Conservation (SINC)
Study Area	Special Areas of Conservation (SAC)
Operational Modelled Road	Sites of Special Scientific Interest (SSSI)
Air Quality Management Area (AQMA)	Roadside Nature Reserve (RNR)
National Nature Reserve (NNR)	Veteran Tree
Ramsar Site (RAMSAR)	Operational Human Receptors
Special Areas of Conservation (SAC)	Project Change in Annual Mean NO <sub>2</sub> at Human Receptors
Sites of Special Scientific Interest (SSSI)	Imperceptible change
Roadside Nature Reserve (RNR)	Perceptible decrease
Veteran Tree	Perceptible decrease > AQS objective
Operational Human Receptors	Perceptible increase
Project Change in Annual Mean NO <sub>2</sub> at Human Receptors	Perceptible increase > AQS objective
Imperceptible change	Receptor Demolished with Project
Perceptible decrease	Short-term AQS Objective Receptor
Perceptible decrease > AQS objective	Operational Ecological Receptors
Perceptible increase	Ecological Receptor
Perceptible increase > AQS objective	Epping Forest (SAC Gridded Receptor)
Receptor Demolished with Project	Ecological Transects



Client: national highways

Project: LOWER THAMES CROSSING

Status	DCO Application	Original Size	A3	Revision	P02
Application Document Number	TR010032/APP/6.2	Scale	1:15,000		
Drawing Title	Figure 5.6 - Operational Phase Receptors and Results				
	Page 69 of 83				
Drawing Number	HE540039-CJV-EAQ-SZP_EGNE00000000-DR-LE-50012				



Contains Ordnance Survey data. © Crown copyright and database rights 2022. Ordnance Survey 100030649.  
Contains public sector information licensed under the Open Government Licence v3.0

Rev	Status	Rev. Date	Purpose of revision	Drawn	Chkd	Apprvd
P02	S2	19/10/2022	DCO Application	CD	MS	PM

**Legend**

Route Alignment	Ancient Woodland (AW)	Ramsar Site (RAMSAR)	Veteran Tree	Perceptible decrease > AQS objective	Short-term AQS Objective Receptor
Order Limits	Local Nature Reserve (LNR)	Special Areas of Conservation (SAC)	Operational Human Receptors	Perceptible increase	Operational Ecological Receptors
District Borough Boundary	Local Wildlife Site (LWS)/Site of Importance for Nature Conservation (SINC)	Sites of Special Scientific Interest (SSSI)	Project Change in Annual Mean NO <sub>2</sub> at Human Receptors	Perceptible increase > AQS objective	Ecological Receptor
Study Area	National Nature Reserve (NNR)	Roadside Nature Reserve (RNR)	Imperceptible change	Receptor Demolished with Project	Epping Forest (SAC Gridded Receptor)
Operational Modelled Road			Perceptible decrease	Ecological Transects	
Air Quality Management Area (AQMA)					

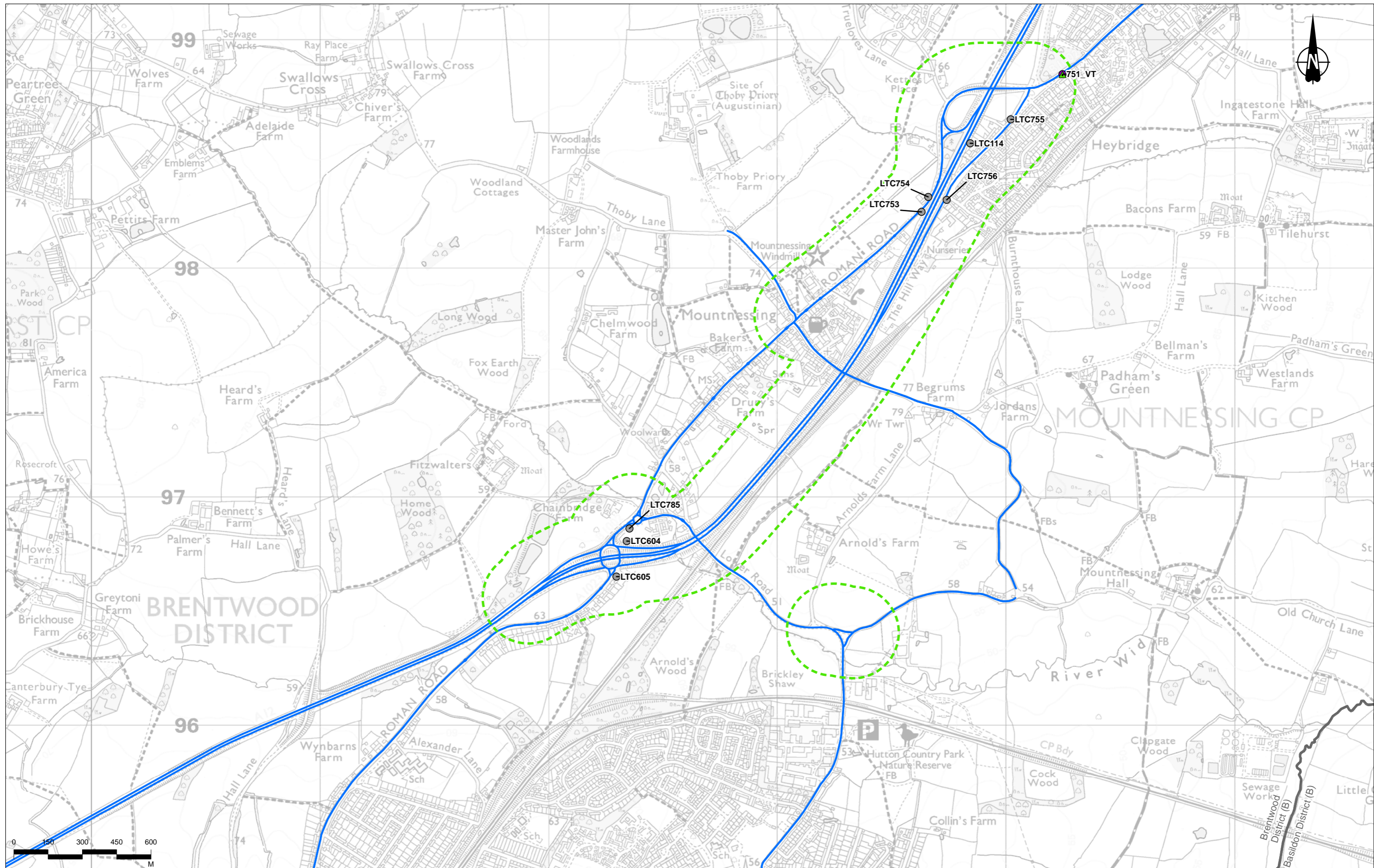


Client: national highways

Project: LOWER THAMES CROSSING

Status	DCO Application	Original Size	A3	Revision	P02
Application Document Number	TR010032/APP/6.2	Scale	1:15,000		
Drawing Title	Figure 5.6 - Operational Phase Receptors and Results				
	Page 70 of 83				
Drawing Number	HE540039-CJV-EAQ-SZP_EGNE0000000-DR-LE-50012				

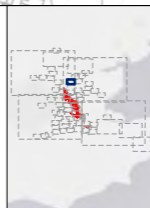




Contains Ordnance Survey data. © Crown copyright and database rights 2022. Ordnance Survey 100030649.  
Contains public sector information licensed under the Open Government Licence v3.0

Rev	Status	Rev. Date	Purpose of revision	Drawn	Chkd	Apprv'd
P02	S2	19/10/2022	DCO Application	CD	MS	PM

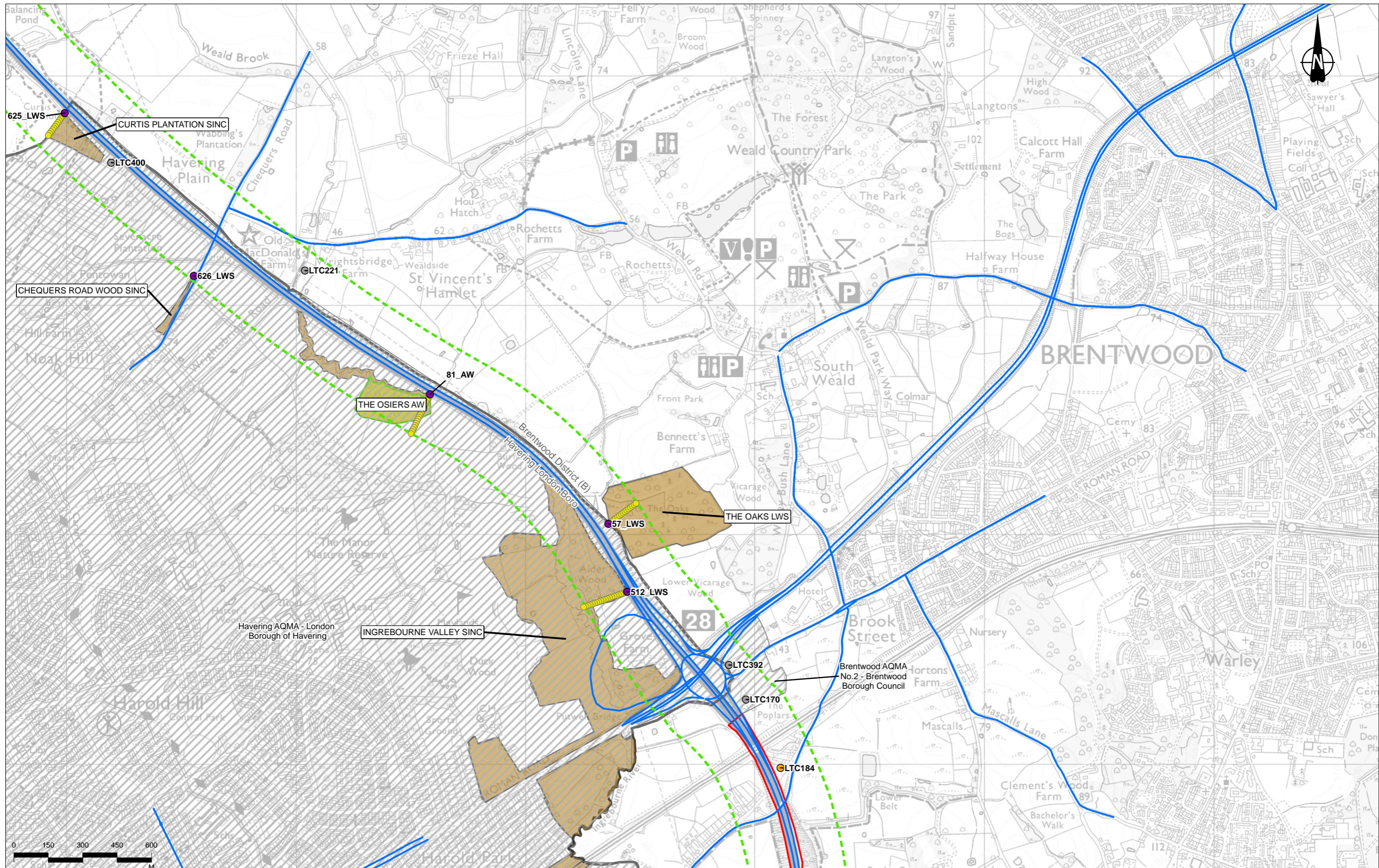
Legend	
Route Alignment	Ancient Woodland (AW)
Order Limits	Local Nature Reserve (LNR)
District Borough Boundary	Local Wildlife Site (LWS)/Site of Importance for Nature Conservation (SINC)
Study Area	Sites of Special Scientific Interest (SSSI)
Operational Modelled Road	Roadside Nature Reserve (RNR)
Air Quality Management Area (AQMA)	Ramsar Site (RAMSAR)
Veteran Tree	Special Areas of Conservation (SAC)
Operational Human Receptors	Sites of Special Scientific Interest (SSSI)
Project Change in Annual Mean NO <sub>2</sub> at Human Receptors	Roadsides Nature Reserve (RNR)
Imperceptible change	Veteran Tree
Perceptible decrease	Operational Human Receptors
Perceptible decrease > AQS objective	Project Change in Annual Mean NO <sub>2</sub> at Human Receptors
Perceptible increase	Imperceptible change
Perceptible increase > AQS objective	Perceptible decrease
Receptor Demolished with Project	Short-term AQS Objective Receptor
Short-term AQS Objective Receptor	Operational Ecological Receptors
Ecological Receptor	Ecological Receptor
Epping Forest (SAC Gridded Receptor)	Epping Forest (SAC Gridded Receptor)
Ecological Transects	Ecological Transects



Client: national highways

Project: LOWER THAMES CROSSING

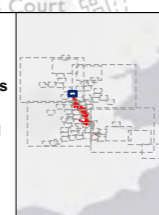
Status	DCO Application	Original Size	A3	Revision	P02
Application Document Number	TR010032/APP/6.2	Scale	1:15,000		
Drawing Title	Figure 5.6 - Operational Phase Receptors and Results				
Drawing Number	HE540039-CJV-EAQ-SZP_EGNE0000000-DR-LE-50012				
Page 71 of 83					



Contains Ordnance Survey data. © Crown copyright and database rights 2022. Ordnance Survey 100030649.  
Contains public sector information licensed under the Open Government Licence v3.0

Rev	Status	Rev. Date	Purpose of revision	Drawn	Checked	Approved
P02	S2	19/10/2022	DCO Application	CD	MS	PM

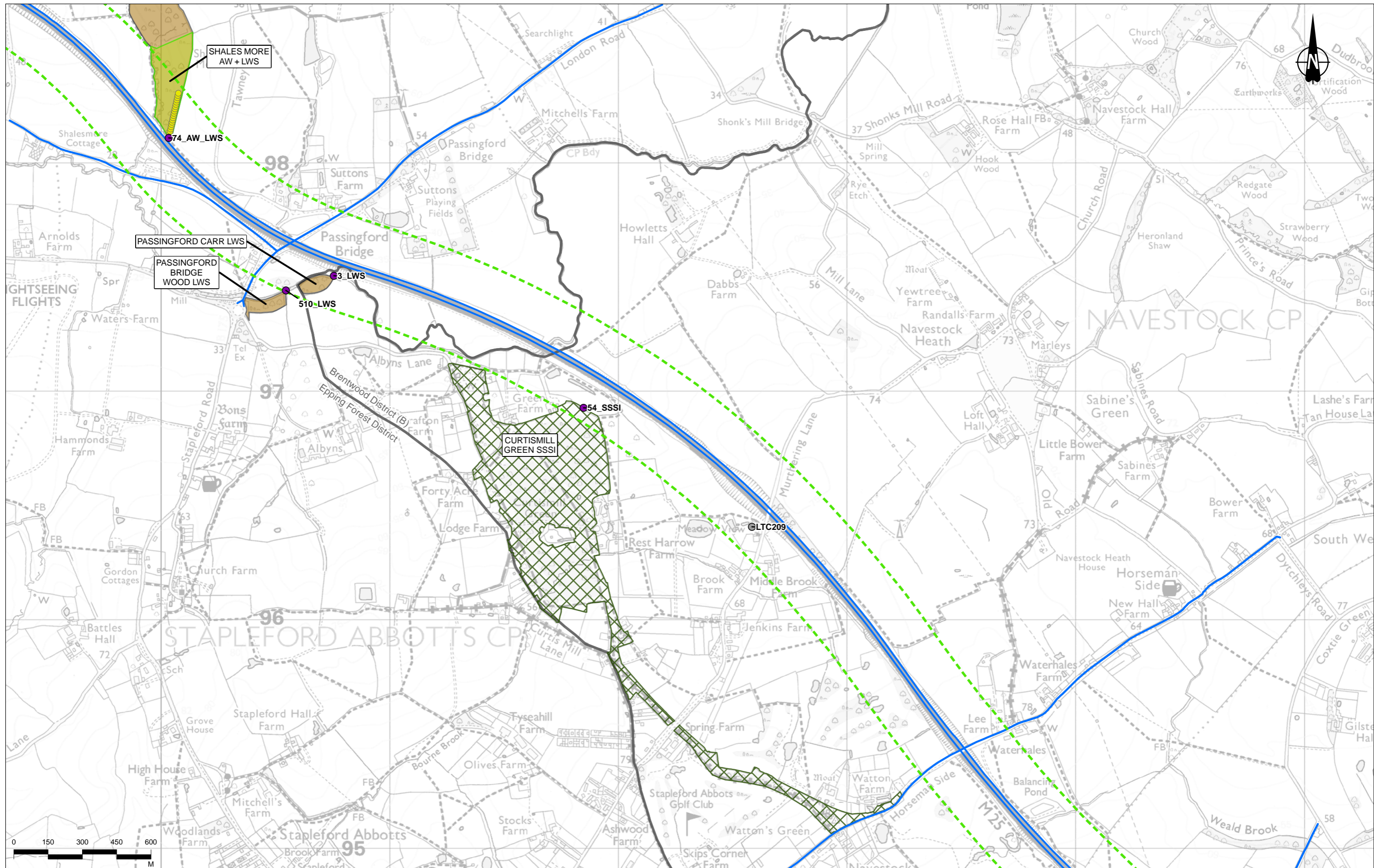
Legend	
	Route Alignment
	Order Limits
	District Borough Boundary
	Study Area
	Operational Modelled Road
	Air Quality Management Area (AQMA)
	Ancient Woodland (AW)
	Local Nature Reserve (LNR)
	Local Wildlife Site (LWS)/Site of Importance for Nature Conservation (SINC)
	National Nature Reserve (NNR)
	Ramsar Site (RAMSAR)
	Special Areas of Conservation (SAC)
	Sites of Special Scientific Interest (SSSI)
	Roadside Nature Reserve (RNR)
	Veteran Tree
	Operational Human Receptors
	Project Change in Annual Mean NO <sub>2</sub> at Human Receptors
	Imperceptible change
	Perceptible decrease
	Perceptible decrease > AQS objective
	Perceptible increase
	Perceptible increase > AQS objective
	Receptor Demolished with Project
	Short-term AQS Objective Receptor
	Operational Ecological Receptors
	Ecological Receptor
	Epping Forest (SAC Gridded Receptor)
	Ecological Transects



Client: national highways

Project: LOWER THAMES CROSSING

Status	DCO Application	Original Size	A3	Revision	P02
Application Document Number	TR010032/APP/6.2	Scale	1:15,000		
Drawing Title	Figure 5.6 - Operational Phase Receptors and Results				
	Page 72 of 83				
Drawing Number	HE540039-CJV-EAQ-SZP_EGNE0000000-DR-LE-50012				



Contains Ordnance Survey data. © Crown copyright and database rights 2022. Ordnance Survey 100030649.  
Contains public sector information licensed under the Open Government Licence v3.0

Rev	Status	Rev. Date	Purpose of revision	Drawn	Checked	Approved
P02	S2	19/10/2022	DCO Application	CD	MS	PM

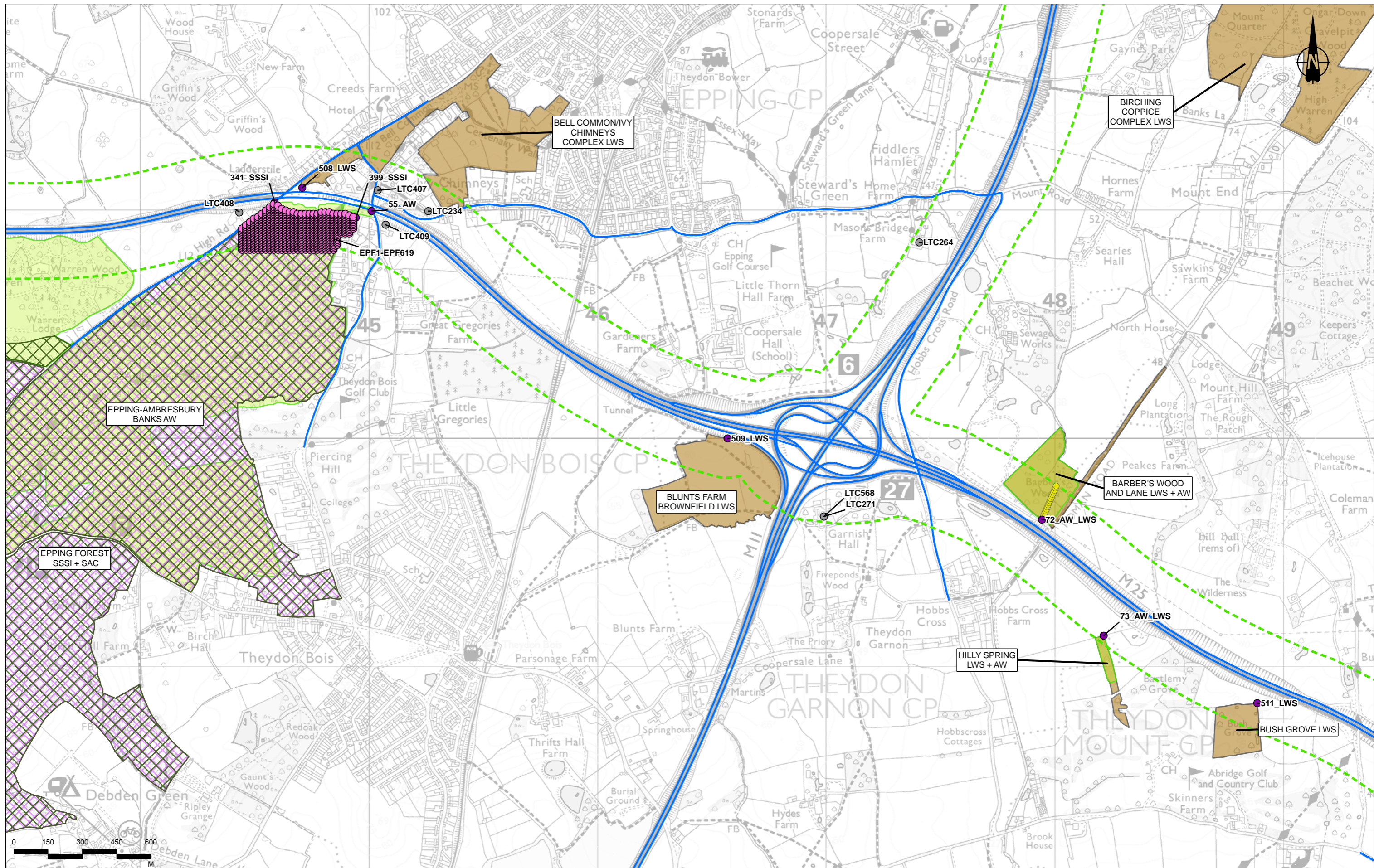
Legend	
Route Alignment	Ancient Woodland (AW)
Order Limits	Local Nature Reserve (LNR)
District Borough Boundary	Local Wildlife Site (LWS)/Site of Importance for Nature Conservation (SINC)
Study Area	Sites of Special Scientific Interest (SSSI)
Operational Modelled Road	Roadside Nature Reserve (RNR)
Air Quality Management Area (AQMA)	Ramsar Site (RAMSAR)
Veteran Tree	Special Areas of Conservation (SAC)
Operational Human Receptors	Sites of Special Scientific Interest (SSSI)
Project Change in Annual Mean NO <sub>2</sub> at Human Receptors	Roadsides Nature Reserve (RNR)
Imperceptible change	Veteran Tree
Perceptible decrease	Perceptible decrease > AQS objective
Perceptible increase	Perceptible increase > AQS objective
Perceptible increase > AQS objective	Receptor Demolished with Project
Short-term AQS Objective Receptor	Ecological Receptors
Operational Ecological Receptors	Epping Forest (SAC Gridded Receptor)
Ecological Receptor	Ecological Transects
Epping Forest (SAC Gridded Receptor)	
Ecological Transects	



Client: national highways

Project: LOWER THAMES CROSSING

Status	DCO Application	Original Size	A3	Revision	P02
Application Document Number	TR010032/APP/6.2	Scale	1:15,000		
Drawing Title	Figure 5.6 - Operational Phase Receptors and Results				
	Page 73 of 83				
Drawing Number	HE540039-CJV-EAQ-SZP_EGNE0000000-DR-LE-50012				



Contains Ordnance Survey data. © Crown copyright and database rights 2022. Ordnance Survey 100030649.  
Contains public sector information licensed under the Open Government Licence v3.0

Rev	Status	Rev. Date	Purpose of revision	Drawn	Chkd	Apprvd
P02	S2	19/10/2022	DCO Application	CD	MS	PM

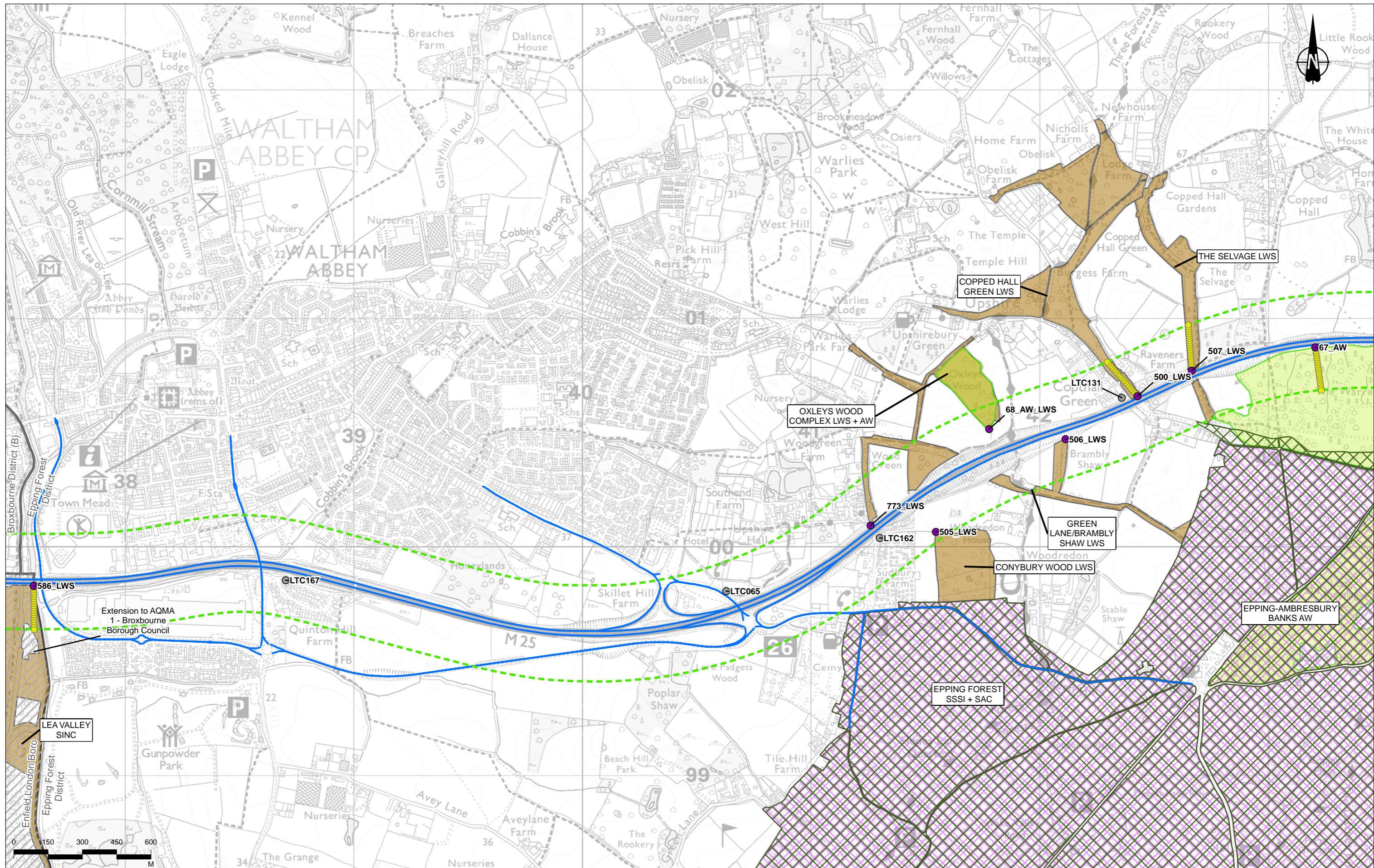
Legend	
	Route Alignment
	Order Limits
	District Borough Boundary
	Study Area
	Operational Modelled Road
	Air Quality Management Area (AQMA)
	Ancient Woodland (AW)
	Local Nature Reserve (LNR)
	Local Wildlife Site (LWS)/Site of Importance for Nature Conservation (SINC)
	National Nature Reserve (NNR)
	Ramsar Site (RAMSAR)
	Special Areas of Conservation (SAC)
	Sites of Special Scientific Interest (SSSI)
	Roadside Nature Reserve (RNR)
	Veteran Tree
	Operational Human Receptors
	Project Change in Annual Mean NO <sub>2</sub> at Human Receptors
	Imperceptible change
	Perceptible decrease
	Perceptible decrease > AQS objective
	Perceptible increase
	Perceptible increase > AQS objective
	Receptor Demolished with Project
	Short-term AQS Objective Receptor
	Operational Ecological Receptors
	Ecological Receptor
	Epping Forest (SAC Gridded Receptor)
	Ecological Transects



Client: national highways

Project: LOWER THAMES CROSSING

Status	DCO Application	Original Size	A3	Revision	P02
Application Document Number	TR010032/APP/6.2	Scale	1:15,000		
Drawing Title	Figure 5.6 - Operational Phase Receptors and Results Page 74 of 83				
Drawing Number	HE540039-CJV-EAQ-SZP_EGNE0000000-DR-LE-50012				



Contains Ordnance Survey data. © Crown copyright and database rights 2022. Ordnance Survey 100030649.  
Contains public sector information licensed under the Open Government Licence v3.0

Rev	Status	Rev. Date	Purpose of revision	Drawn	Chkd	Appvd
P02	S2	19/10/2022	DCO Application	CD	MS	PM

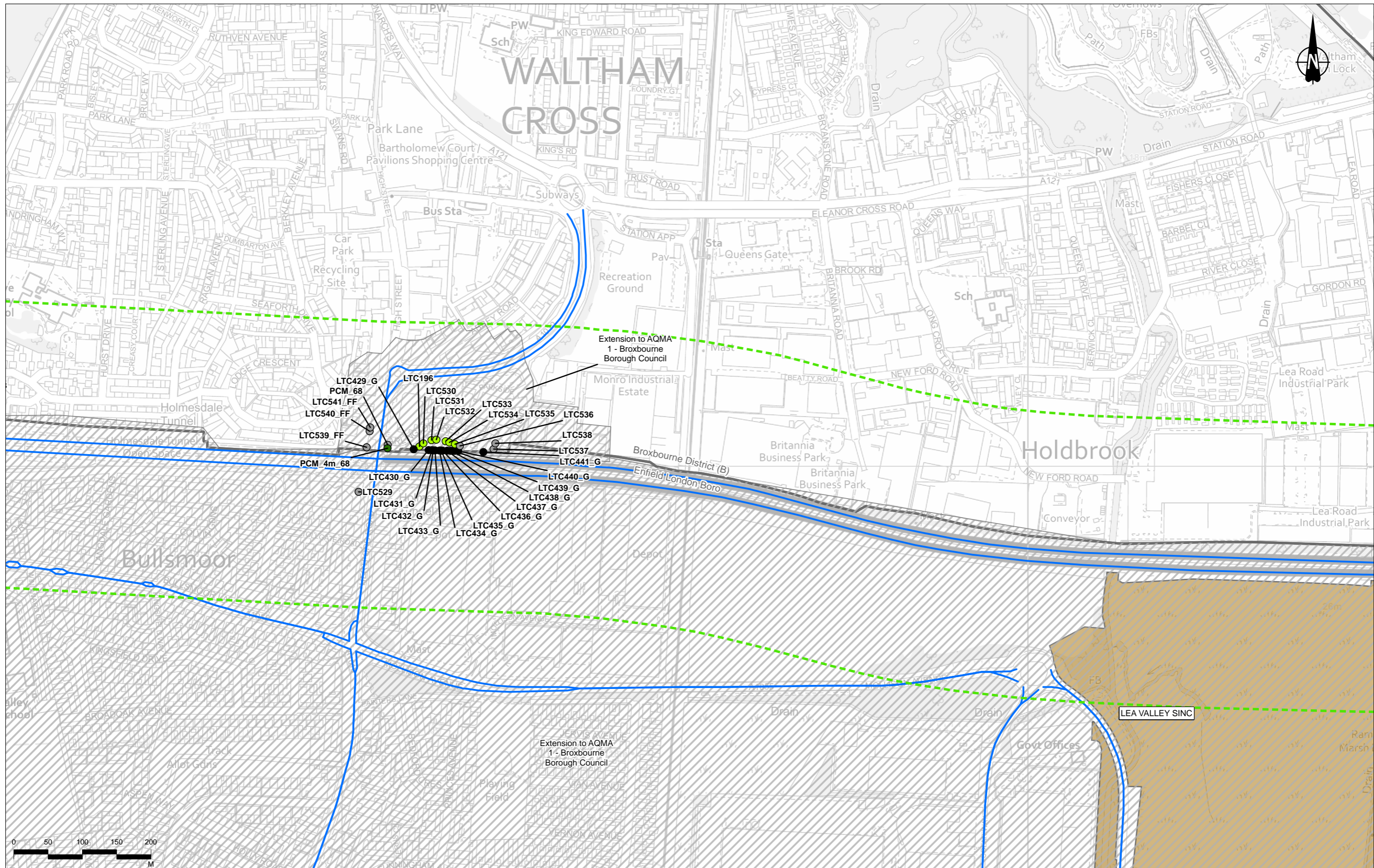
Legend	Legend	Legend	Legend	Legend	Legend
Route Alignment	Ancient Woodland (AW)	Ramsar Site (RAMSAR)	Veteran Tree	Perceptible decrease > AQS objective	Short-term AQS Objective Receptor
Order Limits	Local Nature Reserve (LNR)	Special Areas of Conservation (SAC)	Operational Human Receptors	Perceptible increase	Operational Ecological Receptors
District Borough Boundary	Local Wildlife Site (LWS)/Site of Importance for Nature Conservation (SINC)	Sites of Special Scientific Interest (SSSI)	Project Change in Annual Mean NO <sub>2</sub> at Human Receptors	Perceptible increase > AQS objective	Ecological Receptor
Study Area	National Nature Reserve (NNR)	Roadside Nature Reserve (RNR)	Imperceptible change	Receptor Demolished with Project	Epping Forest (SAC Gridded Receptor)
Operational Modelled Road			Perceptible decrease		Ecological Transects
Air Quality Management Area (AQMA)					



Client: **national highways**

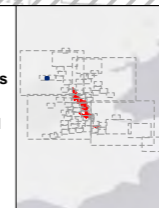
Project: **LOWER THAMES CROSSING**

Status	DCO Application	Original Size	A3	Revision	P02
Application Document Number	TR010032/APP/6.2	Scale	1:15,000		
Drawing Title	Figure 5.6 - Operational Phase Receptors and Results				
	Page 75 of 83				
Drawing Number	HE540039-CJV-EAQ-SZP_EGNE0000000-DR-LE-50012				



Rev	Status	Rev. Date	Purpose of revision	Drawn	Chkd	Apprv'd
P02	S2	19/10/2022	DCO Application	CD	MS	PM

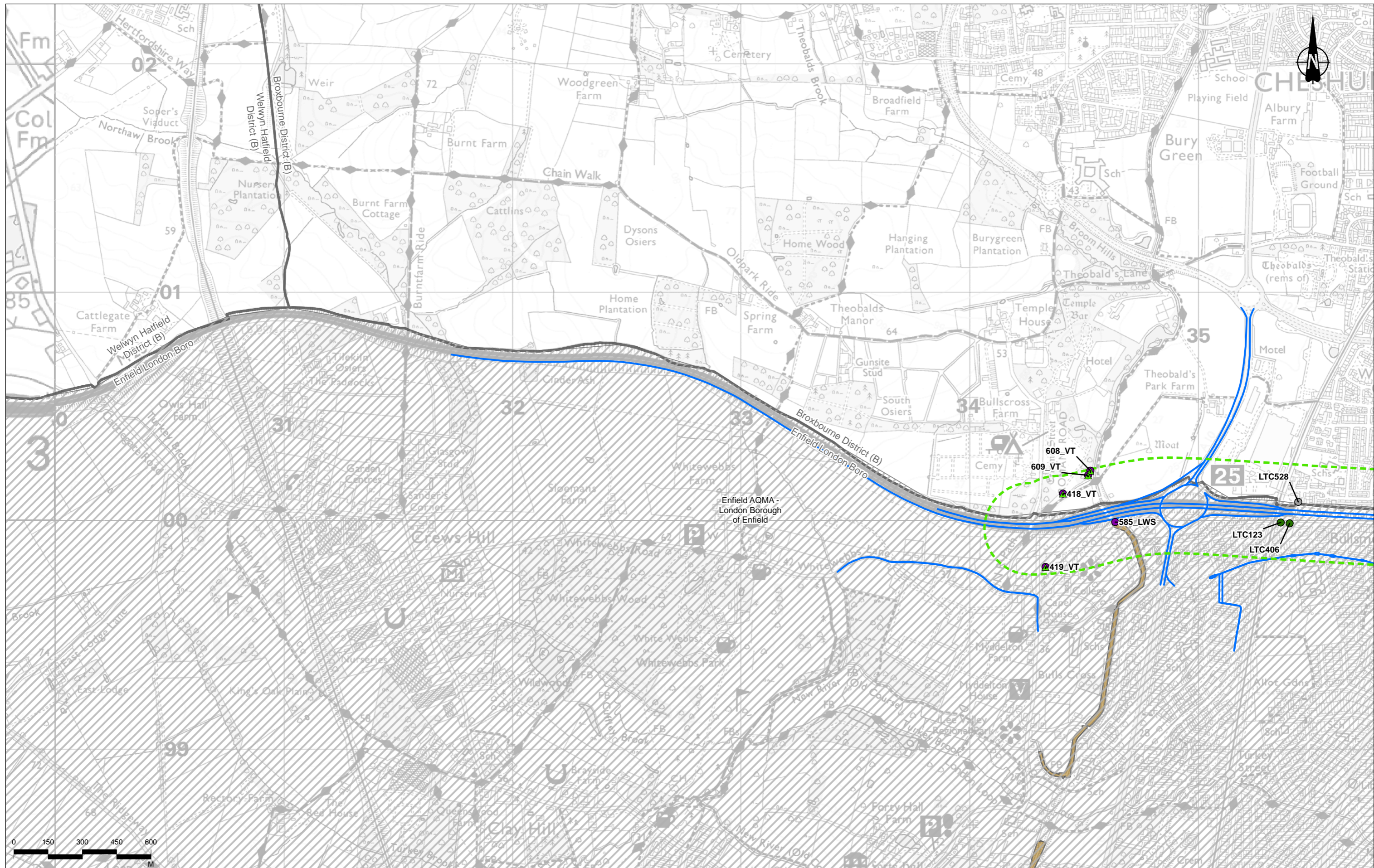
Legend	
Route Alignment	Ancient Woodland (AW)
Order Limits	Local Nature Reserve (LNR)
District Borough Boundary	Local Wildlife Site (LWS)/Site of Importance for Nature Conservation (SINC)
Study Area	Sites of Special Scientific Interest (SSSI)
Operational Modelled Road	Roadside Nature Reserve (RNR)
Air Quality Management Area (AQMA)	Veteran Tree
Ramsar Site (RAMSAR)	Operational Human Receptors
Special Areas of Conservation (SAC)	Project Change in Annual Mean NO <sub>2</sub> at Human Receptors
Sites of Special Scientific Interest (SSSI)	Imperceptible change
Roadside Nature Reserve (RNR)	Perceptible decrease
Veteran Tree	Perceptible decrease > AQS objective
Operational Human Receptors	Perceptible increase
Project Change in Annual Mean NO <sub>2</sub> at Human Receptors	Perceptible increase > AQS objective
Imperceptible change	Receptor Demolished with Project
Perceptible decrease	Short-term AQS Objective Receptor
Perceptible decrease > AQS objective	Operational Ecological Receptors
Perceptible increase	Ecological Receptor
Perceptible increase > AQS objective	Epping Forest (SAC Gridded Receptor)
Receptor Demolished with Project	Ecological Transects



Client: national highways

Project: LOWER THAMES CROSSING

Status	DCO Application	Original Size	A3	Revision	P02
Application Document Number	TR010032/APP/6.2	Scale	1:5,000		
Drawing Title	Figure 5.6 - Operational Phase Receptors and Results				
Drawing Number	HE540039-CJV-EAQ-SZP_EGNE0000000-DR-LE-50012				



Contains Ordnance Survey data. © Crown copyright and database rights 2022. Ordnance Survey 100030649.  
Contains public sector information licensed under the Open Government Licence v3.0

P02	S2	19/10/2022	DCO Application	CD	MS	PM
Rev	Status	Rev. Date	Purpose of revision	Drawn	Checked	Approved

**Legend**

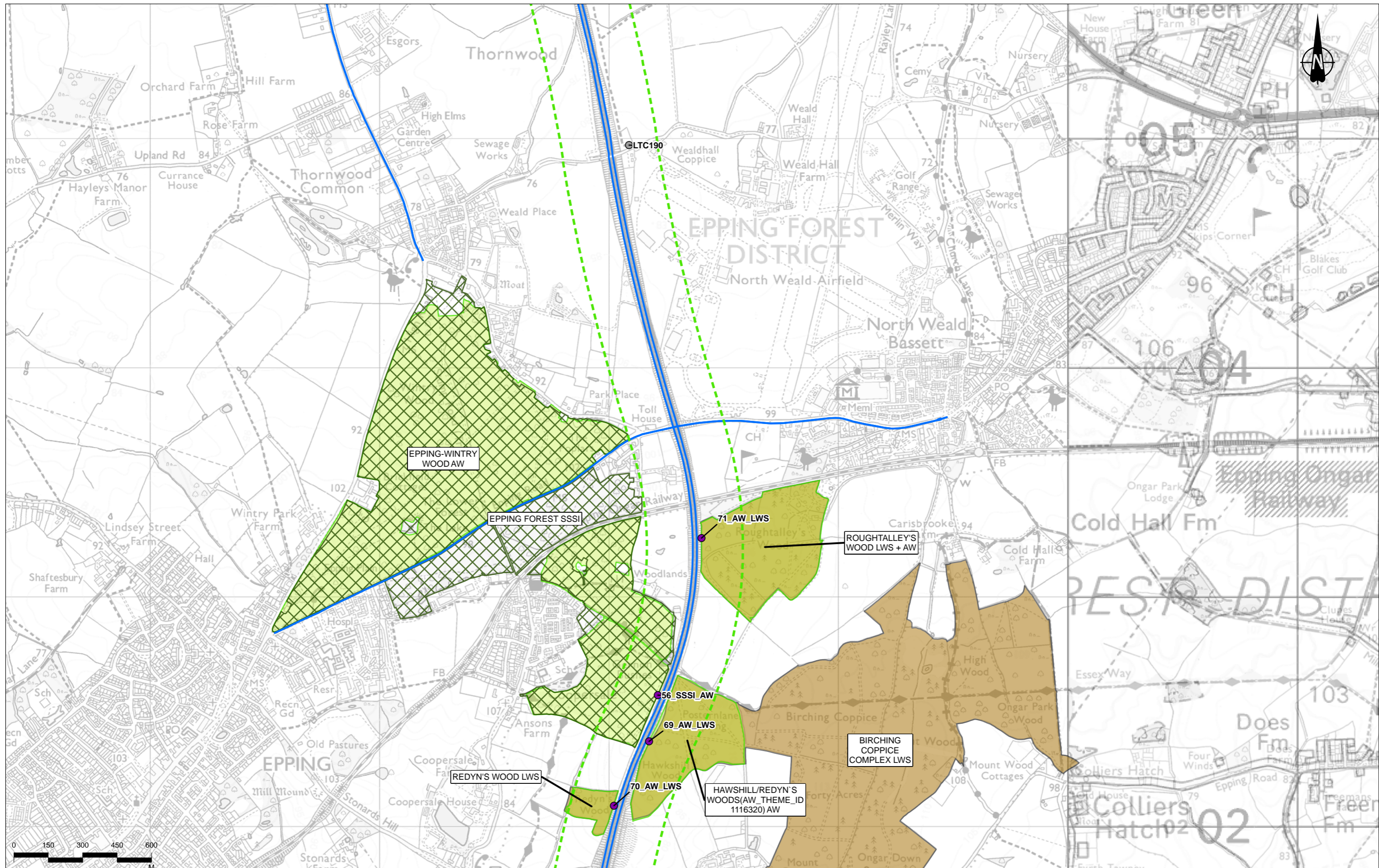
Route Alignment	Ancient Woodland (AW)	Ramsar Site (RAMSAR)	Veteran Tree	Perceptible decrease > AQS objective	Short-term AQS Objective Receptor
Order Limits	Local Nature Reserve (LNR)	Special Areas of Conservation (SAC)	Operational Human Receptors	Perceptible increase	Operational Ecological Receptors
District Borough Boundary	Local Wildlife Site (LWS)/Site of Importance for Nature Conservation (SINC)	Sites of Special Scientific Interest (SSSI)	Project Change in Annual Mean NO <sub>2</sub> at Human Receptors	Perceptible increase > AQS objective	Ecological Receptor
Study Area	National Nature Reserve (NNR)	Roadside Nature Reserve (RNR)	Imperceptible change	Receptor Demolished with Project	Epping Forest (SAC Gridded Receptor)
Operational Modelled Road			Perceptible decrease	Ecological Transects	
Air Quality Management Area (AQMA)					



Client: national highways

Project: **LOWER THAMES CROSSING**

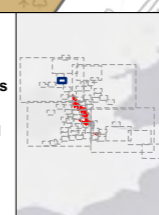
Status	DCO Application	Original Size	A3	Revision	P02
Application Document Number	TR010032/APP/6.2	Scale	1:15,000		
Drawing Title	Figure 5.6 - Operational Phase Receptors and Results				
	Page 77 of 83				
Drawing Number	HE540039-CJV-EAQ-SZP_EGNE0000000-DR-LE-50012				



Contains Ordnance Survey data. © Crown copyright and database rights 2022. Ordnance Survey 100030649.  
Contains public sector information licensed under the Open Government Licence v3.0

Rev	Status	Rev. Date	Purpose of revision	Drawn	Chkd	Apprvd
P02	S2	19/10/2022	DCO Application	CD	MS	PM

Legend	
Route Alignment	Ancient Woodland (AW)
Order Limits	Local Nature Reserve (LNR)
District Borough Boundary	Local Wildlife Site (LWS)/Site of Importance for Nature Conservation (SINC)
Study Area	Sites of Special Scientific Interest (SSSI)
Operational Modelled Road	Roadside Nature Reserve (RNR)
Air Quality Management Area (AQMA)	Ramsar Site (RAMSAR)
Veteran Tree	Special Areas of Conservation (SAC)
Operational Human Receptors	Sites of Special Scientific Interest (SSSI)
Project Change in Annual Mean NO <sub>2</sub> at Human Receptors	National Nature Reserve (NNR)
Imperceptible change	Perceptible decrease
Perceptible decrease > AQS objective	Perceptible increase > AQS objective
Perceptible increase > AQS objective	Receptor Demolished with Project
Short-term AQS Objective Receptor	Ecological Receptors
Ecological Receptor	Epping Forest (SAC Gridded Receptor)
Epping Forest (SAC Gridded Receptor)	Ecological Transects

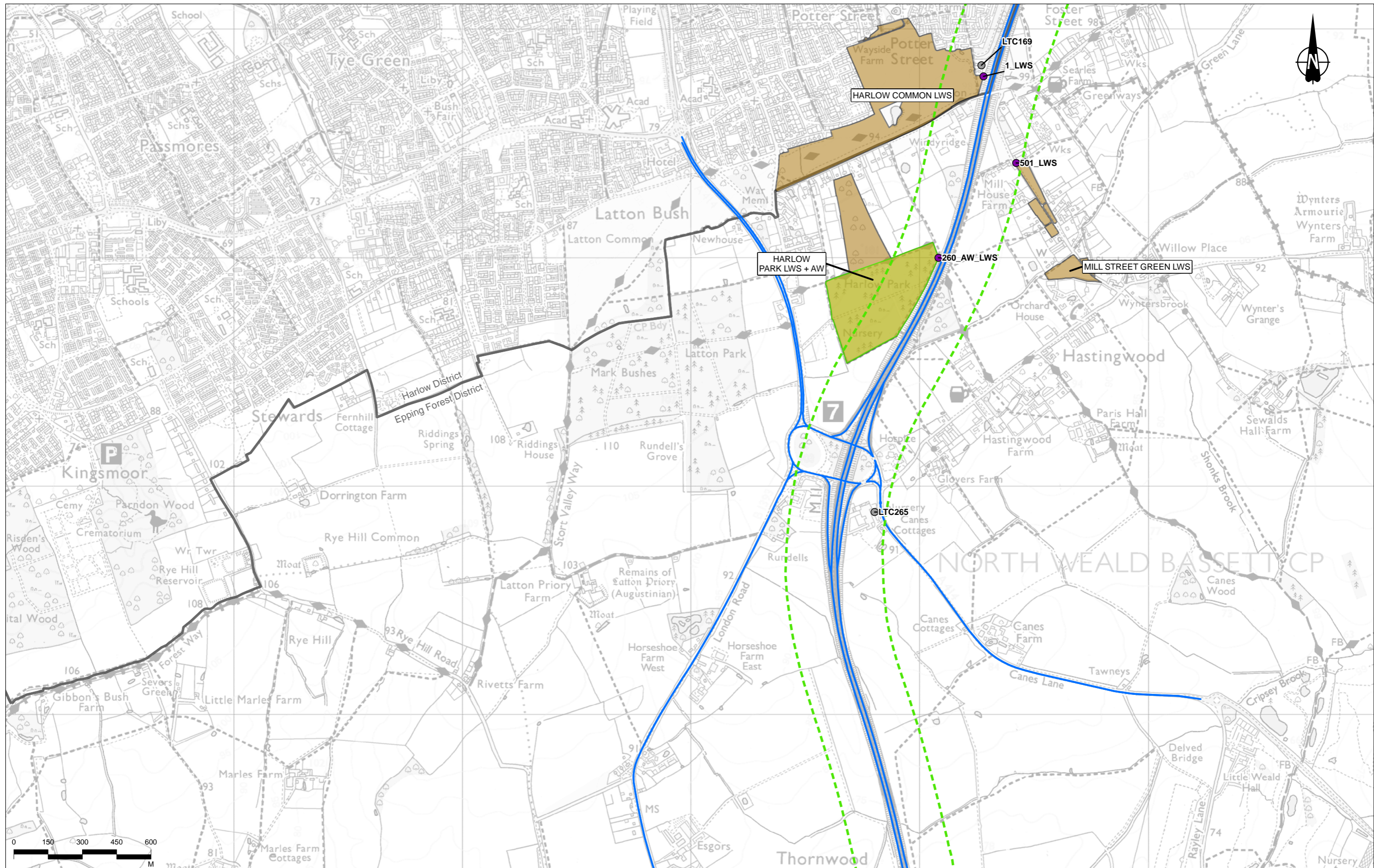


Client: national highways

Project: LOWER THAMES CROSSING

Status	DCO Application	Original Size	A3	Revision	P02
Application Document Number	TR010032/APP/6.2	Scale	1:15,000		
Drawing Title	Figure 5.6 - Operational Phase Receptors and Results				
	Page 78 of 83				
Drawing Number	HE540039-CJV-EAQ-SZP_EGNE0000000-DR-LE-50012				





Contains Ordnance Survey data. © Crown copyright and database rights 2022. Ordnance Survey 100030649.  
Contains public sector information licensed under the Open Government Licence v3.0

Rev	Status	Rev. Date	Purpose of revision	Drawn	Chkd	Apprvd
P02	S2	19/10/2022	DCO Application	CD	MS	PM

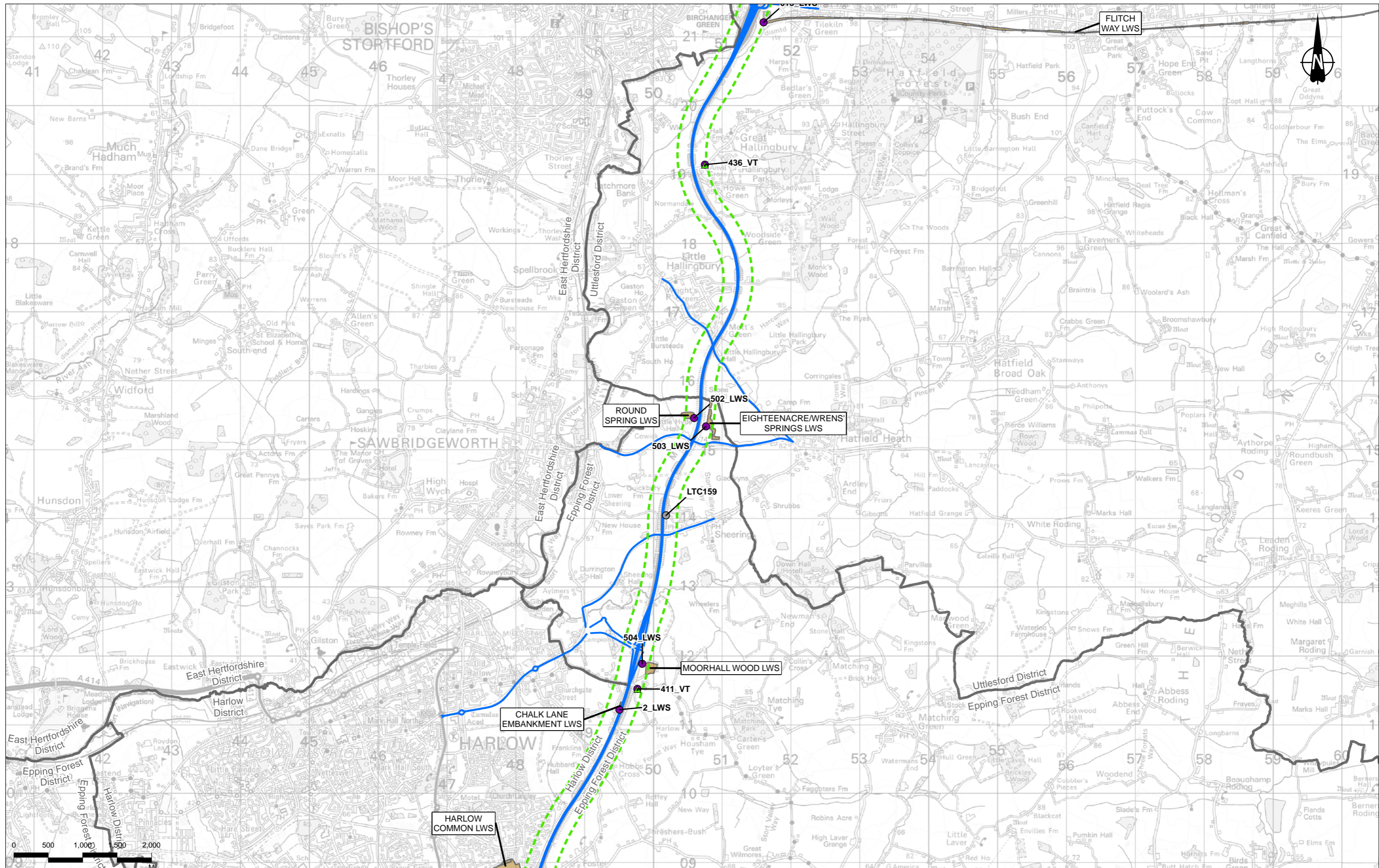
Legend	
Route Alignment	Ancient Woodland (AW)
Order Limits	Local Nature Reserve (LNR)
District Borough Boundary	Local Wildlife Site (LWS)/Site of Importance for Nature Conservation (SINC)
Study Area	Ramsar Site (RAMSAR)
Operational Modelled Road	Special Areas of Conservation (SAC)
Air Quality Management Area (AQMA)	Sites of Special Scientific Interest (SSSI)
National Nature Reserve (NNR)	Roadside Nature Reserve (RNR)
Veteran Tree	Operational Human Receptors
Project Change in Annual Mean NO <sub>2</sub> at Human Receptors	Imperceptible change
Perceptible decrease > AQS objective	Perceptible decrease
Perceptible increase	Short-term AQS Objective Receptor
Perceptible increase > AQS objective	Operational Ecological Receptors
Receptor Demolished with Project	Ecological Receptor
	Epping Forest (SAC Gridded Receptor)
	Ecological Transects



Client: national highways

Project: LOWER THAMES CROSSING

Status	DCO Application	Original Size	A3	Revision	P02
Application Document Number	TR010032/APP/6.2	Scale	1:15,000		
Drawing Title	Figure 5.6 - Operational Phase Receptors and Results				
	Page 79 of 83				
Drawing Number	HE540039-CJV-EAQ-SZP_EGNE0000000-DR-LE-50012				



Contains Ordnance Survey data. © Crown copyright and database rights 2022. Ordnance Survey 100030649.  
Contains public sector information licensed under the Open Government Licence v3.0

Rev	Status	Rev. Date	Purpose of revision	Drawn	Chkd	Appvd
P02	S2	19/10/2022	DCO Application	CD	MS	PM

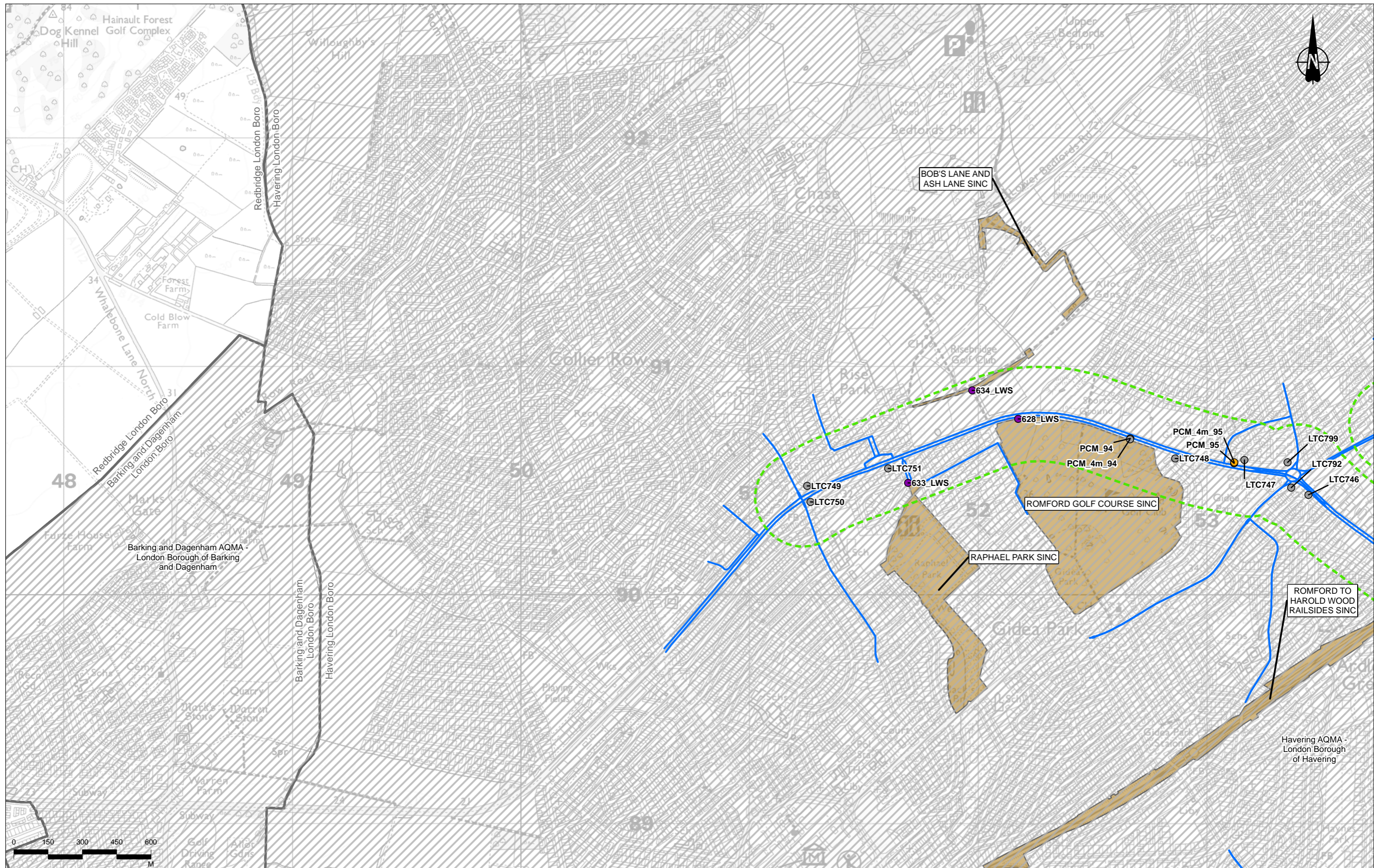
Legend	
	Route Alignment
	Order Limits
	District Borough Boundary
	Study Area
	Operational Modelled Road
	Air Quality Management Area (AQMA)
	Ancient Woodland (AW)
	Local Nature Reserve (LNR)
	Local Wildlife Site (LWS)/Site of Importance for Nature Conservation (SINC)
	National Nature Reserve (NNR)
	Ramsar Site (RAMSAR)
	Special Areas of Conservation (SAC)
	Sites of Special Scientific Interest (SSSI)
	Roadside Nature Reserve (RNR)
	Veteran Tree
	Operational Human Receptors
	Project Change in Annual Mean NO <sub>2</sub> at Human Receptors
	Imperceptible change
	Perceptible decrease
	Perceptible decrease > AQS objective
	Perceptible increase
	Perceptible increase > AQS objective
	Receptor Demolished with Project
	Short-term AQS Objective Receptor
	Operational Ecological Receptors
	Ecological Receptor
	Epping Forest (SAC Gridded Receptor)
	Ecological Transects



Client: national highways

Project: LOWER THAMES CROSSING

Status	DCO Application	Original Size	A3	Revision	P02
Application Document Number	TR010032/APP/6.2	Scale	1:50,000		
Drawing Title	Figure 5.6 - Operational Phase Receptors and Results				
	Page 80 of 83				
Drawing Number	HE540039-CJV-EAQ-SZP_EGNE0000000-DR-LE-50012				



Contains Ordnance Survey data. © Crown copyright and database rights 2022. Ordnance Survey 100030649.  
Contains public sector information licensed under the Open Government Licence v3.0

Rev	Status	Rev. Date	Purpose of revision	Drawn	Checked	Approved
P02	S2	19/10/2022	DCO Application	CD	MS	PM

Legend	
	Route Alignment
	Order Limits
	District Borough Boundary
	Study Area
	Operational Modelled Road
	Air Quality Management Area (AQMA)
	Ancient Woodland (AW)
	Local Nature Reserve (LNR)
	Local Wildlife Site (LWS)/Site of Importance for Nature Conservation (SINC)
	National Nature Reserve (NNR)
	Ramsar Site (RAMSAR)
	Special Areas of Conservation (SAC)
	Sites of Special Scientific Interest (SSSI)
	Roadside Nature Reserve (RNR)
	Veteran Tree
	Operational Human Receptors
	Project Change in Annual Mean NO <sub>2</sub> at Human Receptors
	Imperceptible change
	Perceptible decrease
	Perceptible decrease > AQS objective
	Perceptible increase
	Perceptible increase > AQS objective
	Receptor Demolished with Project
	Short-term AQS Objective Receptor
	Operational Ecological Receptors
	Ecological Receptor
	Epping Forest (SAC Gridded Receptor)
	Ecological Transects



Client:

Project: **LOWER THAMES CROSSING**

Status	DCO Application	Original Size	A3	Revision	P02
Application Document Number	TR010032/APP/6.2	Scale	1:15,000		
Drawing Title	Figure 5.6 - Operational Phase Receptors and Results Page 81 of 83				
Drawing Number	HE540039-CJV-EAQ-SZP_EGNE0000000-DR-LE-50012				



Contains Ordnance Survey data. © Crown copyright and database rights 2022. Ordnance Survey 100030049.  
Contains public sector information licensed under the Open Government Licence v3.0

Rev	Status	Rev. Date	Purpose of revision	Drawn	Chkd	Apprvd
P02	S2	19/10/2022	DCO Application	CD	MS	PM

**Legend**

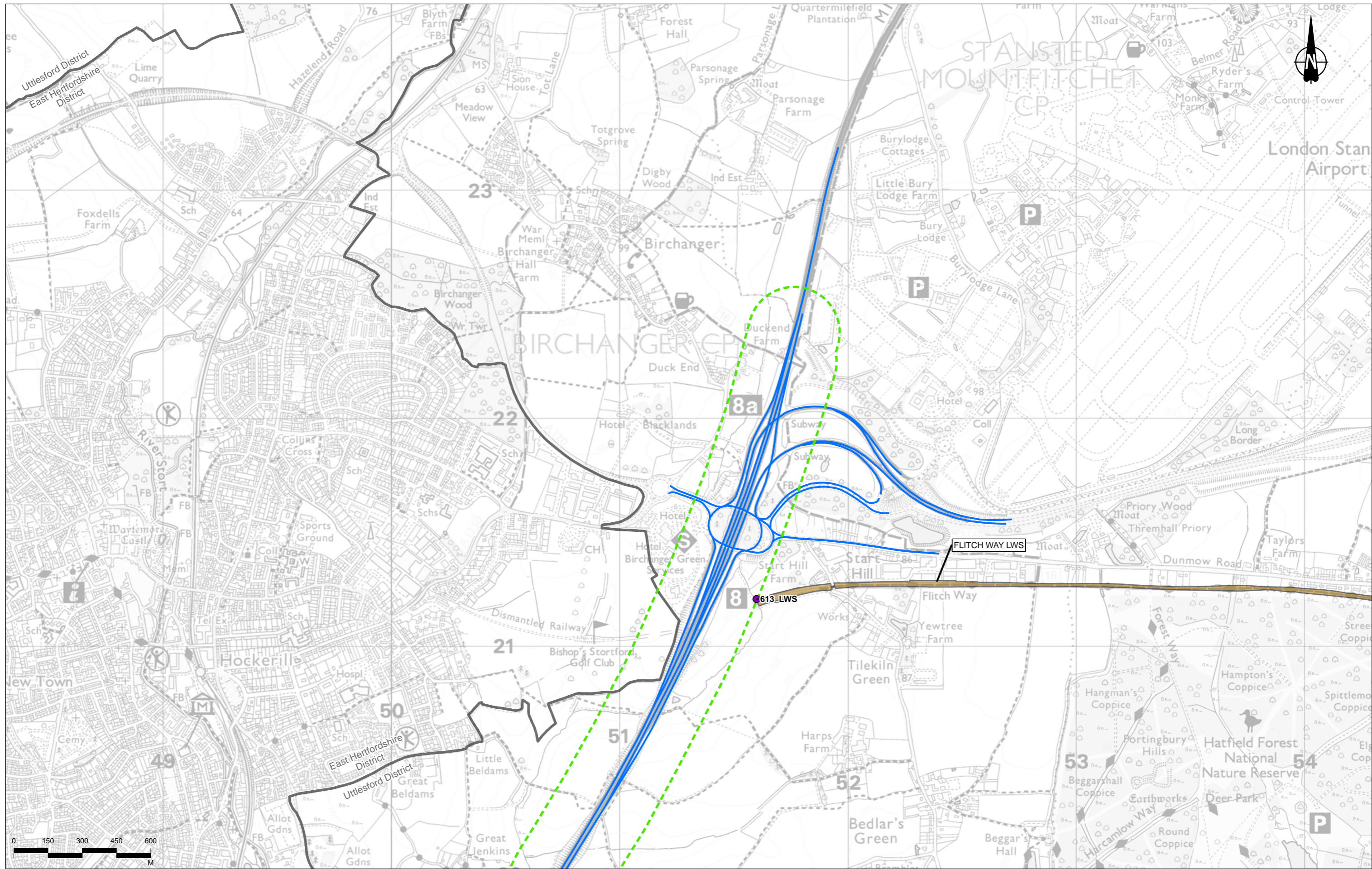
Route Alignment	Ancient Woodland (AW)	Ramsar Site (RAMSAR)	Veteran Tree	Perceptible decrease > AQS objective	Short-term AQS Objective Receptor
Order Limits	Local Nature Reserve (LNR)	Special Areas of Conservation (SAC)	Operational Human Receptors	Perceptible increase	Operational Ecological Receptors
District Borough Boundary	Local Wildlife Site (LWS)/Site of Importance for Nature Conservation (SINC)	Sites of Special Scientific Interest (SSSI)	Project Change in Annual Mean NO <sub>2</sub> at Human Receptors	Perceptible increase > AQS objective	Ecological Receptor
Study Area	National Nature Reserve (NNR)	Roadside Nature Reserve (RNR)	Imperceptible change	Receptor Demolished with Project	Epping Forest (SAC Gridded Receptor)
Operational Modelled Road			Perceptible decrease	Ecological Transects	
Air Quality Management Area (AQMA)					



Client: national highways

Project: LOWER THAMES CROSSING

Status	DCO Application	Original Size	A3	Revision	P02
Application Document Number	TR010032/APP/6.2	Scale	1:50,000		
Drawing Title	Figure 5.6 - Operational Phase Receptors and Results				
	Page 82 of 83				
Drawing Number	HE540039-CJV-EAQ-SZP_EGNE0000000-DR-LE-50012				



0	150	300	450	600
M				

Legend	
	Route Alignment
	Order Limits
	District Borough Boundary
	Study Area
	Operational Modelled Road
	Air Quality Management Area (AQMA)
	Ancient Woodland (AW)
	Local Nature Reserve (LNR)
	Local Wildlife Site (LWS)/Site of Importance for Nature Conservation (SINC)
	National Nature Reserve (NNR)
	Ramsar Site (RAMSAR)
	Special Areas of Conservation (SAC)
	Sites of Special Scientific Interest (SSSI)
	Roadside Nature Reserve (RNR)
	Veteran Tree
	Operational Human Receptors
	Project Change in Annual Mean NO <sub>2</sub> at Human Receptors
	Imperceptible change
	Perceptible decrease
	Perceptible decrease > AQS objective
	Perceptible increase
	Perceptible increase > AQS objective
	Receptor Demolished with Project
	Short-term AQS Objective Receptor
	Operational Ecological Receptors
	Ecological Receptor
	Epping Forest (SAC Gridded Receptor)
	Ecological Transects



Client: **national highways**

Project: **LOWER THAMES CROSSING**

Status	DCO Application	Original Size	A3	Revision	P02
Application Document Number	TR010032/APP/6.2	Scale	1:15,000		
Drawing Title	Figure 5.6 - Operational Phase Receptors and Results				
Drawing Number	HE540039-CJV-EAQ-SZP_EGNE0000000-DR-LE-50012				

If you need help accessing this or any other National Highways information, please call **0300 123 5000** and we will help you.

© Crown copyright 2022.

You may re-use this information (not including logos) free of charge in any format or medium, under the terms of the Open Government Licence. To view this licence:

visit [www.nationalarchives.gov.uk/doc/open-government-licence/](http://www.nationalarchives.gov.uk/doc/open-government-licence/)

write to the **Information Policy Team, The National Archives, Kew, London TW9 4DU**, or email [psi@nationalarchives.gsi.gov.uk](mailto:psi@nationalarchives.gsi.gov.uk).

Mapping (where present): © Crown copyright and database rights 2022 OS 100030649. You are permitted to use this data solely to enable you to respond to, or interact with, the organisation that provided you with the data. You are not permitted to copy, sub-license, distribute or sell any of this data to third parties in any form.

If you have any enquiries about this publication email [info@nationalhighways.co.uk](mailto:info@nationalhighways.co.uk) or call **0300 123 5000\***.

\*Calls to 03 numbers cost no more than a national rate call to an 01 or 02 number and must count towards any inclusive minutes in the same way as 01 and 02 calls. These rules apply to calls from any type of line including mobile, BT, other fixed line or payphone. Calls may be recorded or monitored.

Printed on paper from well-managed forests and other controlled sources when issued directly by National Highways.

Registered office Bridge House, 1 Walnut Tree Close, Guildford GU1 4LZ

National Highways Company Limited registered in England and Wales number 09346363